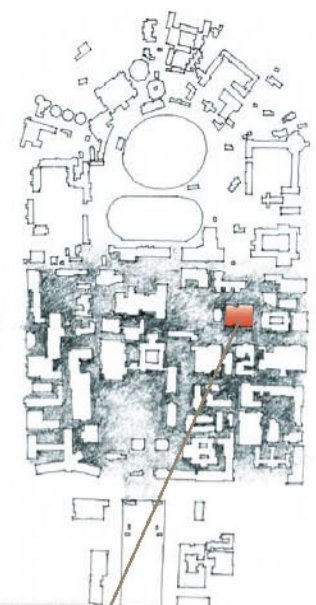


Built Pedagogy

The Faculty becomes a living organism. The campus becomes a frame for interdisciplinary evolution.



A true architecture.

A networked Faculty.

This design proposes an initially compressed version of Cedric Price's Potteries Thinkbelt University: a territorially networked university at the scale of the city. The new Architecture building is an incubator nurturing and cultivating ideas. It becomes the incubator of a viral architecture that spreads from within the confines of the campus through the city, surfacing as a web of academic Learning Hubs: physical moments of intense, informal, academic and social interaction. The model exists: The Melbourne University Eastern Hub.

Across the campus, Faculty buildings are now so many islands in a sea of lawns and paving. More than 60% of the University's ground plane is an under-utilised network of landscaped outdoor rooms awaiting activation and inhabitation. Within each set of faculty buildings there is a potential site for another Learning Hub: a social condenser that engages the life on the University's ground plane with the hitherto secret and esoteric life of the faculty above. As the Melbourne University virus spreads, it will engage other academic institutions, cultural centres, transport nodes...

The existing Architecture Faculty buildings could act as the foundation piece, to be re-used and re-programmed. The existing buildings could be stripped to reveal their loose-fit structural bones, then refurbished – retro-fitted – to extend the Faculty's physical presence out into the intellectual and landscaped field that is the University.

A variety of spaces at different scales could push and pull, close and release, cover and reveal. Fluid, flexible spaces could accommodate many experiences and programmes: formal and informal learning environments, research facilities, experimental workspaces, short-stay visitor apartments, possibly a bar-cafe, commercial office space to house short-term multi-disciplinary coalitions...

The Faculty becomes a living organism expressing in its visual appearance and operational structures the relationships between architecture, science, economics, politics, music, arts, culture, and environmental sustainability.



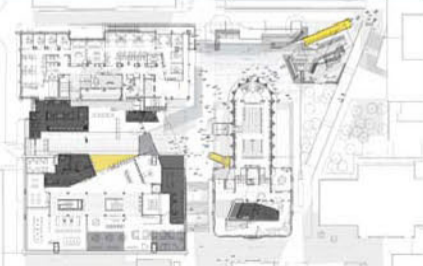
The Eastern Learning Hub,

COX Architects

The concept of the 'learning landscape' informs a range of new working environments: A kind of proto public realm. Students play politics, enact the rituals of groups and individual exchanges, engage with hitherto unknown diversity and witness new representations of life in public space. The new installations provide platforms and stages for these enactments. They are 'events platforms' for occasions both staged and unforeseen.

Opportunity related to COX philosophy.

Melbourne University Eastern Hub project, Melbourne, Victoria



The Eastern Hub is an academic 'learning landscape' in the form of an informal, multi-purpose, outdoor room. It is a form of viral architecture that invades the forgotten interstices between several buildings on the Melbourne University Campus. In a single architectural 'object' (more pavilion than building), this new 'learning landscape' provides sheltered external space that is serviced to support informal learning for individuals and groups; provides connections to internal spaces for information gathering and exchange; establishes 'event platforms' for social and academic use – all in a new form of public space in which students and academics can meet and experience intellectual life in the public realm.



Melbourne University Keith Murdoch Centre, Melbourne, Victoria

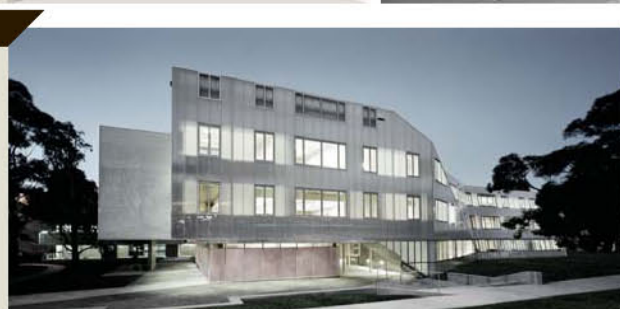


This was a competition design for a new building for the Law Faculty that required, in addition to the usual programme of lecture theatres, seminar rooms and academic staff offices, apartments and facilities to accommodate visiting lecturers. The design approach was to make evident, internally and externally, the several different elements of the programme by lodging them within an expressed structural matrix.



Chisholm Institute of TAFE, Dandenong, Victoria

A double-loaded corridor plan has been slipped, cranked, split and opened up to create idiosyncratic interior geometries where individual learning spaces can be broken down and reconfigured while also making further programmatic connections. Break-out and informal meeting spaces are created around knuckles in the cranked plan, which also allows opportunities to orchestrate environmental performance.



COX built pedagogy

Academic Environment

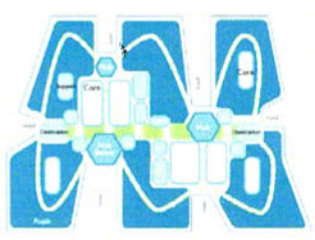
The Faculty is both a physical and an intellectual platform for enquiry, discussion, debate and collaboration. Within the building, the physical platform is a comfortable, naturally lit, naturally ventilated and naturally heated working environment. Its loose-fit structure can be retro-fitted to meet different future academic environments. It's a nice place to work: full of buzz and activity, with convivial meeting places, opportunities for chance encounters with colleagues, students and the professional community, and personal spaces to retreat into.

What also makes this an exciting place to work is its operation as an intellectual platform that extends the Faculty beyond the building precinct, into the campus and out into the city beyond. The town end of the town-and-gown axis offers restaurants and cafes, theatres and galleries, department stores and laneway boutiques, cultural and professional events, business community and government agencies, and the city's other academic institutions. Some of these could be sites of The University of Melbourne's viral academic activity invading the city with permanent architectural outbursts: moments of intense interchange between town and gown.

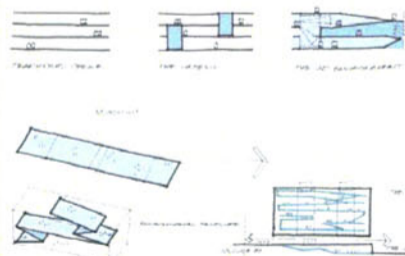
An intellectual platform that extends the Faculty beyond the building precinct, into the campus and out into the city beyond.



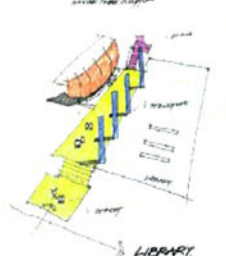
AXA, Melbourne, Victoria



New Workplace
The AXA headquarters is a 50,000m² integrated work place. The new building is a small city within a city: an internalised urban precinct with a street (the primary axis), pathways (circulation), activity hubs, break-out spaces and vertical links to other levels. It is an integrated three-dimensional work environment based on campus planning sustainable design principles within the green envelope of a single building.



City Library, Melbourne, Victoria



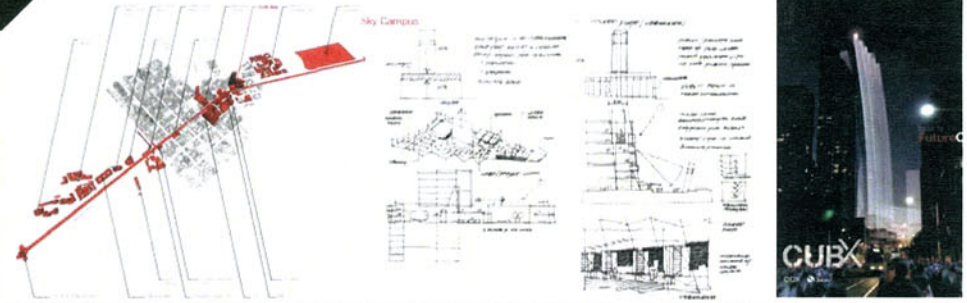
The design intent of the City Library builds upon an understanding of the rich inherited culture of the Melbourne's laneway, in particular that of Degraives Street; moments of discovery and of changing scale. The City library taps upon these qualities as an extension of the streetscape by introducing a three dimensional bluestone public foyer, loaded with a public exhibition mezzanine, meeting and reading zones with different levels of intimacy, and street furniture. The strategy of placing a café at the entry of the library both act as a magnet and a tactic to deinstitutionalize the image of a public library, and to encourage public interaction at a street level.



CUB X competition, Melbourne, Victoria



A competition for an entirely new precinct on the edge of the Melbourne CBD. Its departure point is Melbourne's global city status, a confluence of youth culture, major central business district and two complementary leading Australian universities. It is a three-dimensional network of vibrant places of exchange such as exhibition, performance, learning, commerce, retail, habitat and entertainment, interactive spaces that can be plugged and played in a way that supports accessibility, organic growth and change.



Design Studio

Design studios are the engine rooms of architectural practice, landscape and urban design, physical planning and the Faculty. They are places of formal and informal interaction, collaboration and private speculation, cool discussion and fiery debate, intellectual and physical experimentation, and at times, prolonged intense effort. The design studio can be both physically anchored in time and space, and also portable, a state of mind supported by little more than a notebook and a cup of coffee. One thing the design studio is not, is permanent. Projects come and go and the pedagogical philosophies and methods of the studio are in constant flux: vertical or horizontal, disciplinary or cross-disciplinary, individuals or teams, digital or handmade, paper or built, models or walkthroughs. These places of creative tensions must be suited to endless reinvention, the building sufficiently loose-fit to be retro-fitted at will.

Three types of loose-fit space are envisaged for the design studios: open, closed and multi-purpose.

The Closed Studio

Built along three sides of the existing buildings could be the new wings of the iconic new Faculty building: a cellular loose-fit structure occupied by academic offices and attached studios. In these studios, academic staff run controlled design and research programmes; the kernel of most creative interaction between academics and postgraduate students. These studios – being linked to research programmes – could be comparatively more ‘permanent’ than the open studios above and subject to retro-fitting as programmes come to an end and new ones begin. The physical experiments required for many research programmes in architecture, landscaping, sustainability, building technologies and materials lead to their expression in the cellular matrix of the facades; and this expression embodies the new Faculty building’s distinctive iconography of research and experimentation.

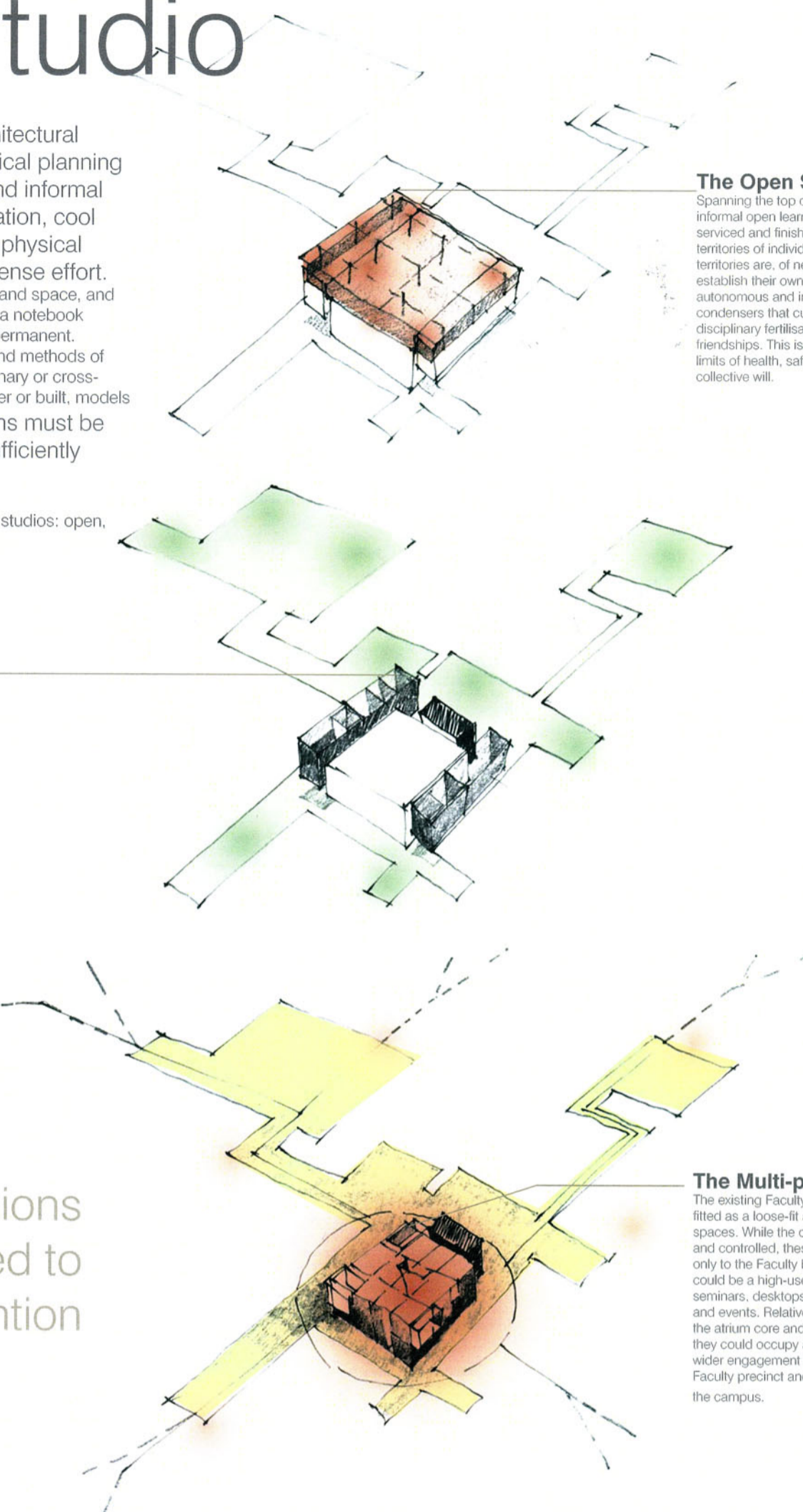
The Open Studio

Spanning the top of the Faculty buildings could be the informal open learning creative platforms: minimally serviced and finished, 24/7, semester-long, free-form territories of individualism and ad hoc collaboration. These territories are, of necessity, self-governing and need to establish their own short-lived social orders: potentially autonomous and independent, even anarchistic, social condensers that cultivate self-reliance, interactions, cross-disciplinary fertilisations, mutual support and life-long friendships. This is territory where anything goes within the limits of health, safety and fire regulations and the studio’s collective will.

The Multi-purpose Studio

The existing Faculty buildings could be stripped and retro-fitted as a loose-fit assembly of semi-permanent cellular spaces. While the open and closed studios are Faculty-based and controlled, these are ‘rooms’ that could be available not only to the Faculty but also to the University at large. This could be a high-use, well-serviced, flexible space suited to seminars, desktops tutorials, crits, all-nighters, exhibitions and events. Relatively close to the ground plane, overlooking the atrium core and subject to almost hourly changes of use, they could occupy a stratum of intense activity, interaction, wider engagement and constant toing and froing between the Faculty precinct and the new informal Learning Hubs around the campus.

Places of creative tensions must be suited to endless reinvention



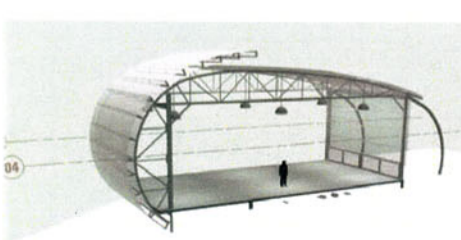
National Institute of Circus Arts, Prahan, Victoria



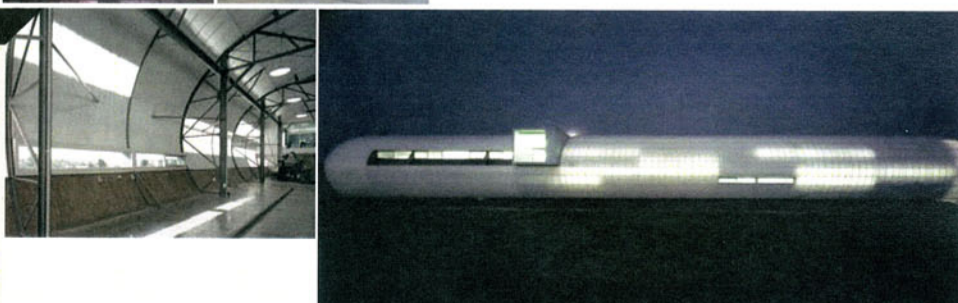
The brief was for a building to house a modern and innovative circus training and performance facility – a ‘university’ of the circus. The design approach to this inexpensive architectural form is based on the poetic expression of the circus performance. The zigzagging blue glass band introduces a playful dynamism to the simple box form; the over-scaled, luscious, red backstage doors that shout ‘Roll Up, Roll Up’; and the expressed interior structure together remember the traditional circus tent.



Polymer Engineering Centre, Broadmeadow, Victoria



The Polymer Engineering Centre is a simulated plastics manufacturing plant that supports laboratory, meeting and multi-media/multi-use staff and teaching spaces. The extrusion method of manufacturing plastic objects is translated into the built form, with outcomes of efficiency and flexibility. The vented double skin allows for air movement, passive climate control and thermal stacking, while providing controlled natural light. The building and its spaces allow a successful crossover between public and private, education and industry, establishing a collaborative working model.



All Hallows’ School, Brisbane, Queensland



The project entailed the challenge of inserting new education program into a historic building that had been used as a motor vehicle showroom. The design approach has been to enhance the sense of layering of architecture over time by inserting the contemporary fabric of the new building within and among the heritage buildings.



Living Building

An apparatus for inclusiveness, flexibility and diversity and

the built expression of past, present and future.

Pedagogical philosophies, didactic principles, disciplinary dogmas are constantly competing, transforming and becoming; ideologies and theories vie; tendencies are born, flourish and pass; past, present and future are engaged. The building to encompass all these contending living forces could be a built demonstration of Koolhaas's 'City of the Captive Globe': an apparatus for inclusiveness, flexibility and diversity and the built expression of past, present and future.

The new buildings of the Faculty could encircle the existing ones. Surmounting them all could be the new rooftop, an inhabited landscaped platform that is a place of experimentation, habitation and recreation. It could be a private place for the Faculty. Surrounded by loose-fit apartments for visiting guests and the Faculty lounge, overlooking a sustainable rooftop garden containing a kitchen garden, experimental landscape plots, water-harvesting systems, solar collectors, wind generators, fish ponds...

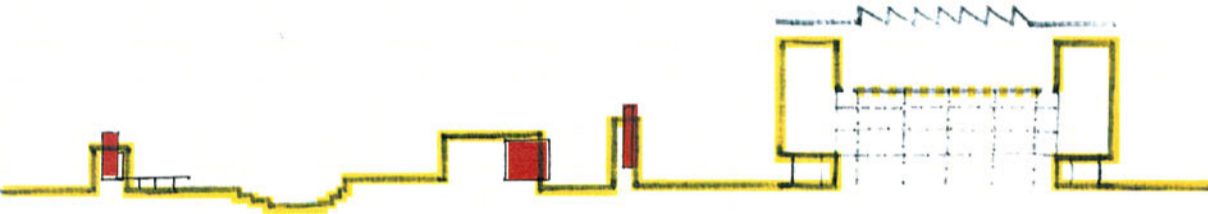
A living evolving pedagogy

The existing Faculty buildings could be retained, stripped back to their loose-fit essence and retro-fitted to house the new multi-purpose programmes of the lower stratum of the Faculty's precinct. On three sides, the cellular matrix of the new wings for closed studios and academic staff offices could express the evolving iconography of experimentation and research. Above possibly the stratum of open studios and an experimental rooftop garden, rising through the centre, the continuation of the existing atrium: the light-filled social heart of the Faculty.



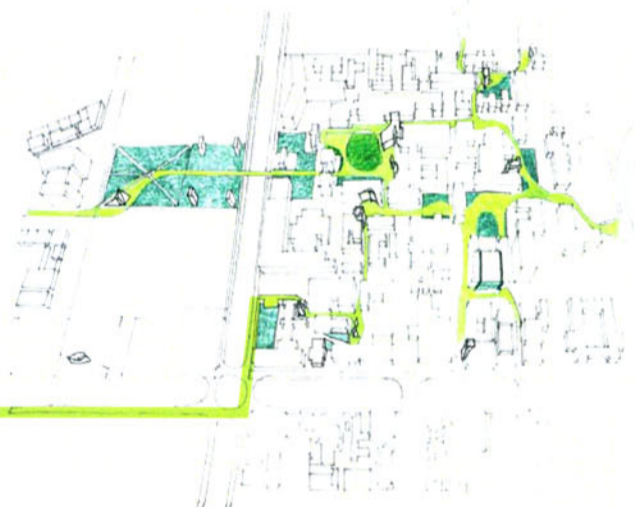
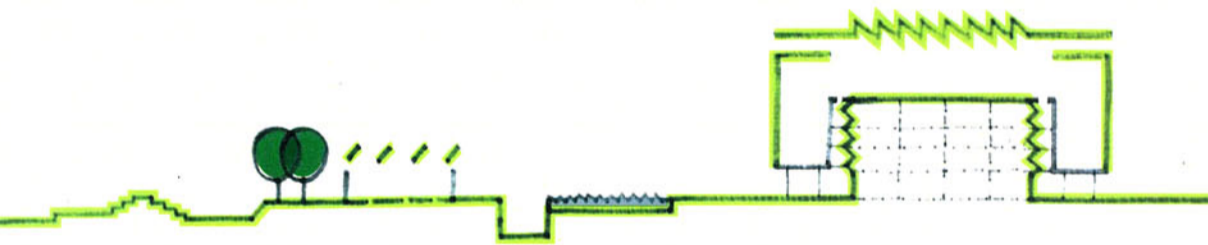
A living evolving pedagogical building

The educational platform possibly built as a warped plane – revolving around the living, open heart of the building, rising, falling, dividing, overlapping, opening, closing, overlooking, and connecting – establishing multiple places for multiple intersections between academics, students, the professional community and the university at large: a retro-fitted, loose-fit warped plane on which all types pedagogical, spatial, environmental and technological propositions can be physically tested, transformed and replaced.



A pedagogical living evolving sustainable building

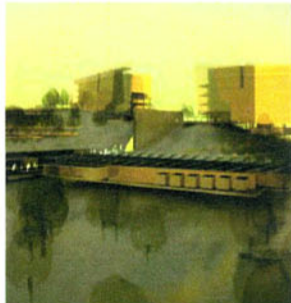
The building could be a demonstration: the first, experimental stage of an integrated campus-wide environmental system of solar collectors, wind generators, water harvesting, food production and micro-climate management. The building structure – loose-fit and retro-fitted – could be a constantly evolving, iconic and functional exhibition of sustainable design and carbon-neutral building. A feature the recycled existing structure (to be retained – with considerable embodied energy benefits), materials, heat, waste and water. The near ideal climate of Melbourne permits a combination of high-tech and low-impact, monitored environmental design systems to aid natural ventilation, lighting, heating and cooling, controlled by the users.



Hong Kong Business School, Hong Kong

Hong Kong University: The Learning Ecology

The design approach visualises the learning ecology as an inhabited landscape rather than a collection of discrete buildings. A folded ground plane connects different spaces in a 'hillside town'. This plane is a public surface, a 'civic' space that permeates the learning ecology. A hierarchy of spaces – from public to semi-public and private, courtyards, terraces, promenades, stages – differentiates various levels of communication. Folds, ripples and stairs dot the landscape are more than interstitial or left-over spaces: every inflection of the ground plane offers the opportunity for people to connect, interact and exchange.



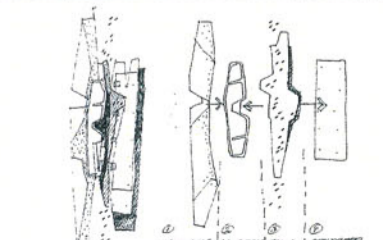
Yulara Tourist Resort Ayers Rock, Northern Territory

Yulara Tourist Resort Ayers Rock (Uluru), NT, operates as a semi-autonomous community in the desert. Its architecture is comparable to a living organism – self-sustainable in every respect. Its tented forms are delicately linked and subtly integrated into the landscape and the adjacent landforms. The design uses passive energy systems for cooling, solar control and rainwater harvesting.



Swinburn – National Centre for Sustainability, Wantirna, Victoria

The building follows environmentally sustainable design principles: earth berms shelter the building from the west and the traffic while on the east and north, sun screening modulates solar gain. The building is organised along a naturally lit and ventilated full height internal 'street' that opens and closes to form 'public' spaces for exhibitions and places for students to gather. On its street side, the building forms a landscaped edge and a public address for the adjacent campus. Into this landscaped zone has been inserted a series of breakout teaching and private study spaces in the form of courtyards and balcony areas.



Merit

Awards

Cox Architects and Planners has consistently won awards in recognition of the quality of its work, some 200 awards in all.

Major international awards include:

- Inaugural IOC Award for Architecture In Sport
- Commonwealth Association of Architects Sir Robert Matthew Award
- Finalist, World Quaternario Award

Major national awards include:

- RAI Public Architecture (Vic) Steel Award
- RAI Interior Design Award (Vic)
- BHP Architecture of the Decade Award
- RAI Sir Zelman Cowen Award
- Three RAI Sir John Sulman Medals
- RAI Wilkinson Awards
- RAI Blacket Award
- RAI Tracey Memorial Award
- RAI Canberra Medallion
- RAI C-S Daley Award
- RAI Queensland FDG Stanley Award

Northern Stand, MCG National Commendation for Public Architecture RAI, 2009
 Winner, RAI New Public Architecture Award (VIC) 2008
 Winner, Architectural Steel Design Award, 2006
 BRW Client Choice Awards
 Shortlisted, Best Architectural Firm, 2009
 Winner, Best Architectural Firm, 2007
 Hepburn Springs Bathhouse Shortlisted, Public Design, Interior Design Awards, 2008
 Shortlisted, Leisure, Conde Nast Traveller Innovation & Design Awards 2009
 Winner, Best Use of Timber Flooring, Australian Timber Design Awards, 2008
 National Institute of Circus Arts Winner, Architectural Steel Design Award, Large Project, 2008
 William Barak Bridge Shortlist, Joseph Reed Award for Urban Design (VIC) 2008
 Commendation, IES Lighting Design Award, 2006
 Building 6, Chisholm Institute of TAFE, Dandenong Campus Winner, Best Environmental Building or Landscape
 Architectural Excellence in the South East Awards, 2007
 Winner, Public and Institutional, Interior Design Award, 2007
 Winner, Colorbond Award, RAI (VIC), 2006
 Polymer Engineering Centre, Kangaroo Island TAFE
 Silver Medal, Green Building Awards, 2002
 Preston Police Station Commendation, Institutional Buildings Category, RAI (VIC), 2004
 Winner, Architectural Steel Design Award, 2004
 ABC Television & Radio HQ
 Winner, MBA Best Communications Building, 2003
 Winner, MBA Best Commercial Building, 2003
 Winner, MBA Construction Excellence Award, 2003
 Artspace Mackay
 RAI Queensland Public Buildings Cultural Building Award, 2003
 RAI Queensland Art & Architecture Award, 2003
 RAI Queensland Mackay Whitsunday Building of the Year, 2003
 Brisbane Powerhouse Centre for the Live Arts
 RAI Queensland FDG Stanley Public Buildings Award 2003

RAIA Queensland Cultural Buildings Award 2003
 RAIA Queensland Conservation Award 2003
 Queensland Maritime Museum
 RAIA Brisbane Building of the Year 2002
 RAIA Queensland Art & Architecture High Commendation 2002
 Lake Macquarie City Art Gallery Winner, Dangar Award- Leisure/recreation/entertainment, Lower Hunter Civic Design Awards, 2001
 Logan Entertainment Centre
 RAIA Brisbane Region Commendation, 2003
 Judith Wright Centre of Contemporary Arts RAI
 Queensland Cultural Buildings Award 2002
 RAIA Queensland Conservation High Commendation 2002

Cox Architects was shortlisted as Best Architectural Firm in the 2009 BRW Client Choice Awards.

We have developed a reputation for innovative and exciting design, as evidenced by the numerous national and international awards we have received over the years.

Millennium Arts Queensland Cultural Centre Master Plan
 RAI Queensland Urban Design Award 2007
 RAI Queensland Public Architecture Award 2007
 RAI Queensland Bluescope Steel Colorbond Award 2007
 Queensland Government Environmental Protection Agency Sustainability in Public Sector Award 2007
 Thuringowa Riverway Arts Centre & Lagoon
 RAI Queensland Planning and Research Award 2002
 Museum of Tropical Queensland
 RAI Queensland FDG Stanley Public Buildings Award 2000
 World Architecture Award Finalist 2001
 RAI North QLD Region Building of the Year Award 2000
 RAI BHP Colorbond Award 2000
 North Lakes Community and Administration Centre
 RAI Queensland Beatrice Hutton High Commendation 2000
 Philip Bacon Galleries
 NZ Origin Timber Design Supreme Award, Commercial or Public Architectural Excellence Category, 2005
 Special Purpose Property Excellence Award, Property Council of NZ Awards, 2006
 RAI Queensland Interior Design High Commendation 2002
 DIA Queensland Design Awards, Interior Design (Retail) Award, 2003
 The National Wine Centre
 Supreme Timber Design Award + Public and Commercial Building Award + Best use of Timber Engineering, Australian Timber Design Awards, 2001
 Architecture Award, 7th World Conference on Timber Engineering, 2002

Presidents Award, Coffey Geosciences Awards for Excellence in Urban Planning, 2001
 Western Australia Maritime Museum RAI (WA Chapter) George Temple Poole Award, 2003
 RAI (WA Chapter) Award – Public Institutional Award, 2003
 Australian Timber Design Awards – Public & Commercial Buildings – Highly Commended, Best Use of Timber Engineering – High Commended, 2002
 Ferry Road Markets
 RAI Queensland Beatrice Hutton Award for Commercial Buildings 2007
 James Street Markets
 RAI Queensland Beatrice Hutton Award for Commercial Buildings 2003
 Brisbane City Council Sub-Tropical Design Award, 2003
 Fujitsu Headquarters, Portal Business Community
 AISC Metal Buildings Architecture Award Queensland 2002
 RAI Queensland Beatrice Hutton Award High Commendation, 2003
 The Thiess Centre RAI Brisbane Region Commendation Award 2000
 SWI South Brisbane RAI Queensland Beatrice Hutton Commercial Commendation 2007
 Isuzu Truck Showroom
 RAI Queensland Beatrice Hutton Commercial High Commendation 2005
 King Street Wharf Site 6 North - KPMG Tower Bronze Medal, Green Building Awards, 2003
 King Street Wharf Site 2 - Retail High Commendation, NSW Urban Taskforce Awards, 2002
 Winner, Best Commercial Composite Frame, Australian Timber Design Awards, 2003
 OTEN Headquarters, Strathfield
 High Commendation, AISC Steel Awards, 1998
 Hudson Gallery
 RAI (WA Chapter) Award - Interior, 2004
 Stage 2, Australian Institute of Management
 BOMA Award, 2004
 Yichang/Ningbo Urban Renewal China
 Queensland Premier's Export Award Finalist 2001
 Springthorpe Winner, Award for Excellence, UDIA, 2003
 Springthorpe Winner, Urban Design Award, RAI, 2004
 Transit Cities - Frankston TAFE to Bay
 Certificate of Commendation, PIA Awards for Planning Excellence, 2003
 M2006 Commonwealth Games Village
 Shortlisted for Communication Design, Victorian Premiers Design Award, 2006
 Second Ponds Creek Environmental Planning Award, PIA (NSW), 2006
 Victoria Park, Zetland Australian Merit Award for Urban Design Excellence, 2002
 Award for excellence for Water Sensitive Urban Design, 2002

Professor (Visiting) UNSW
 Member Deans Council UNSW
 A fellow of the Australian Institute of Export
 Board Member VisAsia Business Council, AGNSW
 National Trust Partnership
 Australian Property Institute
 Member, Royal Institute of British Architects
 Member, Board of Architects, Singapore
 Fellow, Royal Australian Institute of Architects
 Member, Royal Australian Institute of Architects
 Member, Board of Cancer Patients Assistance Society
 Member, Society of Planners

Board Member, Australian Services Roundtable (Immediate Past President) Board Member, Planning Research Centre Advisory Board
 UDIA NSW – member of the board, executive and treasurer, chair of the Urban Revitalisation Committee
 UDAL – Urban Design Alliance (AIA/PIA/AILA) – member of the executive (representing PIA)
 PIA Urban Design Chapter – Alternate Chair
 North Sydney Council Design Excellence Panel member
 BioMelbourne Network (Victoria's premier biotechnology networking organisation, with national links)
 Brisbane City Council Urban Futures Board
 Brisbane City Council Urban Design Advisory Panel
 Australian Business Arts Foundation Councillor
 TEFMA – Tertiary Education Facilities Management Design Advisory Committee Perth City Council
 Development Committee Heritage Council WA
 Architectural Policy Committee WA Government
 Board Member Heritage Perth
 RAI Chapter Council
 RAI Urban Design Committee Urban Design Advisory Committee, Minister of Planning, Canberra
 Contributing Member, ACT Business Council Policy Division.
 Member, ACT Property Council.
 Honorary Fellow, American Institute of Architects.
 Honorary Fellow, New Zealand Institute of Architects.
 Member, Royal Architectural Institute of Canada

Publications

NICA, Monument 80, pp 84-89, April/May 2009
 Cox Architects & Planners, with Philip Cox, Stuart Harrison, Sandra Kaji-O'Grady and Anna Johnson, The Images Publishing Group Pty Ltd, 2008
 Cox Architects: The Millennium Series, Images Publications, 2000
 Suburbs, 1998
 A Place on the Coast, Five Mile Press, 1997
 Cox Architects, Master Architect Series, Images Publications, 1993
 Norfolk Island 1788-1804, the architecture of the first period, with Eric Martin
 Medium Density Housing in Australia, authored chapter
 The Collapse of the Suburban Dream, RAI
 The Work of Philip Cox and Partners 1963-1983
 The Functional Tradition with David Moore. Five Mile Press, Philip Cox Architect, Architectural Monograph
 Australian Colonial Architecture, with Clive Lucas, Lansdowne Press
 Architects of Australia, with Harry Wilson, McMillan
 Restoring Old Australian Houses and Buildings, an Architectural Guide with Howard Tanner, Peter Bridges and James Broadbent, McMillan
 Building Norfolk Island, Nelson Press
 Historic Towns of Australia with Wesley Stacey, Lansdowne Press
 The Australian Homestead with Wesley Stacey, Lansdowne Press
 Norfolk Island Land Use Patterns. Thesis for Town and Country Planning
 Rude Timber Buildings in Australia with Professor JM Freeland and W Stacey, Angus & Robertson
 The Architect & Builder Issue 20, Spring 2006, 'Maritime Centre A Challenger' - Challenger TAFE Maritime Centre, Fremantle
 The Architect & Builder Issue 20, Spring 2006, 'New Classroom Design Entices the Girls' - Perth College Science Building, Mt Lawley
 The Architect, Spring 01, E Tech - Fremantle TAFE E Tech
 Indesign, Volume 28 February 2007, 'Driving Agendas' - RACVA Corporate Headquarters
 Monument, 55 June / July 2003, 'Water World' - Western Australian Maritime Museum, Fremantle
 Monument, 80 April / May 2009, 'In Touch: Materials, Process, Structure' - National Institute of Circus Arts
 Architect Australia, May/June 2006, Vol 95 'Public Works' - Chisholm Institute Dandenong Campus - Access and Language building, Statement (on real estate), ING Real Estate #9 Spring 2005, Australia
 Items - Fremantle Waterfront Commercial Development - RACVA Corporate Headquarters
 Australian Design TRENDS, Volume 14 No. 10, 'Civilised Design' - Cambridge Town Council
 Australian Design TRENDS, Volume 19 No. 4, 'All Visitors Ashore' - Western Australian Maritime Museum, Fremantle

COX Publication

												
1969 RUDE TIMBER BUILDING PHILIP COX AND JOHN FREELAND	1972 THE AUSTRALIAN HOMESTEAD PHILIP COX	1973 HISTORIC TOWNS OF AUSTRALIA PHILIP COX	1975 RESTORING OLD AUSTRALIAN HOUSES AND BUILDINGS PHILIP COX AND HOWARD TANNER, ARCHITECTURAL CONSULTANTS, PETER BRIDGES AND JAMES BROADBENT	1985 PHILIP COX AND PARTNERS PHILIP COX AND PARTNERS	1986 BUILDING NORFOLK ISLAND PHILIP COX	1988 THE AUSTRALIAN FUNCTIONAL PHILIP COX	1991 PHILIP COX: PORTRAIT OF AN AUSTRALIAN ARCHITECT JENNIFER TOM HODGON	1993 AUSTRALIAN COLONIAL ARCHITECTURE PHILIP COX AND CLIVE LUCAS	1994 COX ARCHITECTS MASTER ARCHITECT SERIES COX ARCHITECTS	1997 A PLACE ON THE COAST PHILIP COX AND JAMES HAWLEY, PETER BRIDGES AND PATRICK BINGHAM HALL	2000 COX ARCHITECTS: THE MILLENNIUM SERIES COX ARCHITECTS	2009 COX ARCHITECTS AND PLANNERS COX ARCHITECTS AND PLANNERS BY PHILIP COX, STUART HARRISON, SANDRA KAJI-O'GRADY AND ANNA JOHNSON

2009

Affiliations

- Professor (Visiting) UNSW
- Member Deans Council UNSW
- A fellow of the Australian Institute of Export
- Board Member VisAsia Business Council, AGNSW
- National Trust Partnership
- Australian Property Institute
- Member, Royal Institute of British Architects
- Member, Board of Architects, Singapore
- Fellow, Royal Australian Institute of Architects
- Member, Royal Australian Institute of Architects
- Member, Board of Cancer Patients Assistance Society
- Member, Society of Planners
- Board Member, Australian Services Roundtable (Immediate Past President) Board Member, Planning Research Centre Advisory Board,
- UDIA NSW – member of the board, executive and treasurer, chair of the Urban Revitalisation Committee
- UDAL – Urban Design Alliance (AIA/PIA/AILA) – member of the executive (representing PIA)
- PIA Urban Design Chapter – Alternate Chair
- North Sydney Council Design Excellence Panel member
- BioMelbourne Network (Victoria's premier biotechnology networking organisation, with national links)
- Brisbane City Council Urban Futures Board
- Brisbane City Council Urban Design Advisory Panel
- Australian Business Arts Foundation Councillor
- TEFMA – Tertiary Education Facilities Management Design Advisory Committee Perth City Council
- Development Committee Heritage Council WA
- Architectural Policy Committee WA Government
- Board Member Heritage Perth
- RAI Chapter Council
- RAI Urban Design Committee Urban Design Advisory Committee, Minister of Planning, Canberra
- Contributing Member, ACT Business Council Policy Division.
- Member, ACT Property Council.